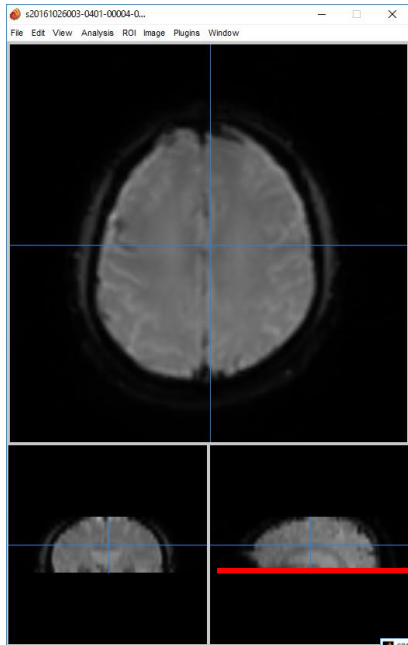
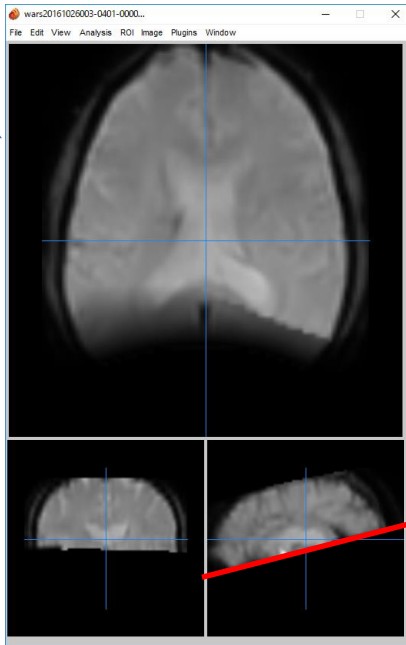


nii view after slicetiming

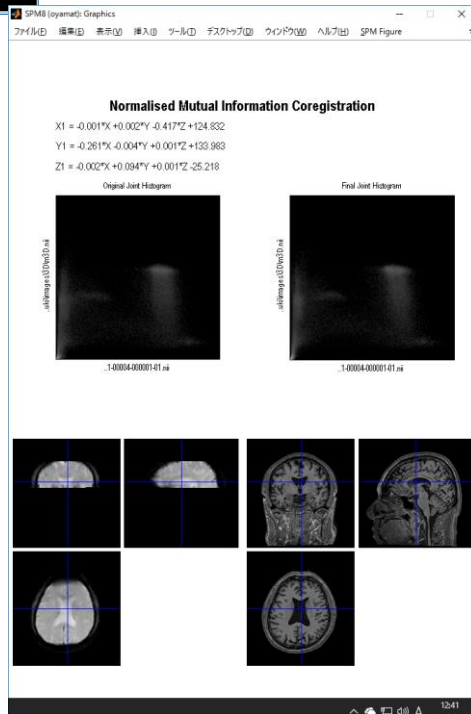


nii view after normalize



same section

Sagittal view become on a slant . Why?



Batch Editor

File Edit View SPM BasicIO

Module List

Current Module: Normalise: Estimate & Write

Help on: Normalise: Estimate & Write

Data

- . Subject
- . Source Image ...ages\3D\m3D.nii, 1
- . Source Weighting Image 0 files
- . Images to Write 301 files

Estimation Options

- . Template Image ..8\templates\T1.nii, 1
- . Template Weighting Image 0 files
- . Source Image Smoothing 8
- . Template Image Smoothing 0
- . Affine Regularisation ICBM space template
- . Nonlinear Frequency Cutoff 25
- . Nonlinear Iterations 16
- . Nonlinear Regularisation 1

Writing Options

- . Preserve ...erve Concentrations
- . Bounding box 2x3 double
- . Voxel sizes [2 2 2]
- . Interpolation Trilinear

Current Item: Template Image

E:\MATLAB\spm8\templates\T1.nii,1

Select Files

Template Image

Specify a template image to match the source image with. The contrast in the template must be similar to that of the source image in order to achieve a good registration. It is also possible to select more than one template, in which case the registration algorithm will try to find the best linear combination of these images in order to best model the intensities in the source image.

